



PTP-H100

Hydraulic High Pressure Calibration Test Pump

PTP-H100 hydraulic (Oil & Water) high pressure calibration test pump is a hand operated pressure pump designed to generate and control to 100 MPa (15,000 psi). This pump incorporates a large reservoir (475 cc) and a dual-piston system which is ideal for filling large volume workload with the hand pump and providing smooth increase and decrease of pressure with the fine adjustment for high pressure calibration and test.

01 Features

- Portable at 3.9 kg with handle for mobile use
- Max 100 MPa(15,000 psi) pressure generation
- Using dual piston to fill large volume systems
- Quick adaptor for easy connection (Hand-tight)
- 475 cc large reservoir volume
- External reservoir (Optional)
- Liquid to Liquid 22cc separator (Optional)
- Easy maintenance – Repair check valves with Allen wrench only
- Isolation valve & Check valve – Stable pressure and leak tight
- Safety valve in reservoir to prevent damage
- Clear reservoir to check the level of contamination
- Use water or oil for media
- Remove the drain plug to easy drain and replace the contaminated media
- Fast & easy pressure generation with less pump stroke

02 Use

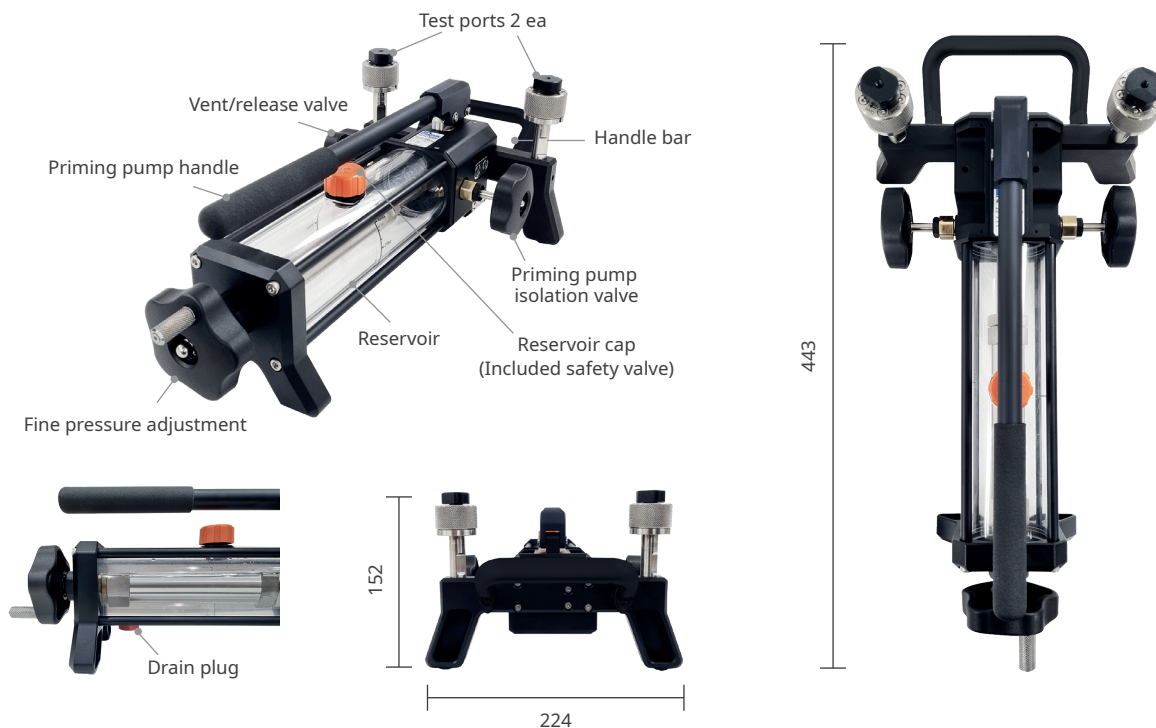
- Portable pressure calibration & test
- Simple calibration for common calibration lab
- Pressure generating and controlling for pressure test lab
- Large volume pressure calibration & test
- High pressure calibration & test
- Burst, leak and pressure-resistant test

03 Specifications

Pressure generation & control	Priming pump	0 ~ 100 MPa (15,000 psi), Lever type hand pump
		Dual piston cylinder system
		4 cc / stroke
	Fine controls	VAC ~ 100 MPa (15,000 psi), Volume Adjustable, Fine controls piston volume 1.3 ml
Test ports	Media	Mineral oil or deionized water (Oil is default media liquid, Available to order water)
	Test ports quantity	2 test ports, 1/4 " PF(G) Female Hand-tight quick connectors (Included Plugs 2ea)
	Adaptors 1 (Optional)	1/8 " , 1/4 " , 3/8 " , 1/2 " PT/PF & NPT Female set (Hand-tight quick connectors) 8 ea
	Adaptors 2 (Optional)	M14 x 1.5, M20 x 1.5 Female Metric set (Hand-tight quick connectors) 2 ea
Materials	Adaptors 3 (Optional)	High pressure Cone type 9/16 " UNF Female 1 ea
	Base	Aluminum
	Piston, Volume Adjustable, Test Port, Valve pins, Check valves	SUS 304
	O-Ring	Viton, Teflon, Aluminum brass alloy
Size	Reservoir	Acrylic
	Dimensions	443 mm D x 224 mm W x 152 mm H
	Weight	3.9 kg
	Reservoir volume	475 cc

PTP-H100

04 Descriptions & Dimensions



05 Ordering Information

Model	Accessories (Included)
PTP-H100 (Oil) PTP-H100-W (Water)	Mineral oil 500 cc
	Spare O-ring kit
	Aluminum plugs 2ea for test ports
	User manual

06 Optional items



Digital pressure gauge
PDR1000 0.025%
PDR500 0.1%
PDR250 0.25%



Carrying case



Quick adaptor 1
(1/8", 1/4", 3/8", 1/2"
PT/PF & NPT
Female set)



Quick adaptor 2
M14 x 1.5, M20 x 1.5
Female Metric set 2 ea



Quick adaptor 3
High pressure 9/16" UNF F
Cone Threaded



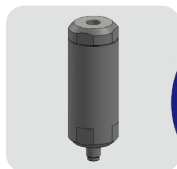
Flexible tubes



External pressure manifold



External reservoir 1L



Liquid to Liquid separator
(Max 70 MPa, 22 cc)



CV KALINDRA MITRA NIAGA

Poris Indah, Jalan Mawar Raya Blok C/97, Cipondoh
Tangerang 15148 – Banten – Indonesia

+62-21-554-1468

+62-816-110-5088

suhadi@kalindramini.com

www.kalindramitra.com